

Semi-Automatic Uniform Carton Sealer

LOGIX EXC 133SD



FEATURES



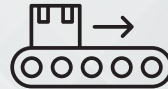
LIGHT-TO-HEAVY DUTY
CARTON CLOSURE



EASY TAPE
CHANGEOVER



TOP AND
BOTTOM SEAL



INFEED/OUTFEED
ROLLER TABLE

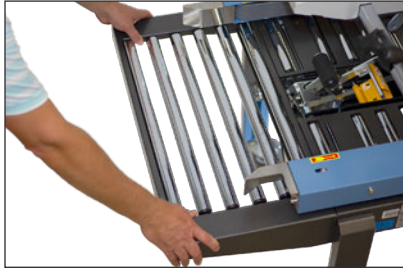
Logix EXC-133SD

SPECIFICATIONS	
Tape Width:	50 mm (2") as standard; 36 mm (1.5") as option 75 mm (2.9") as option
Tape Leg Length:	50 mm (2") tape: 50 ± 5 mm; 75 mm (2.9") tape: 70 ± 5 mm
Tape Core Diameter:	76.2 mm (3")
Tape Outer Diameter:	356 mm (14")
Belt Speed:	23 meter/min (75.4 feet/min)
Carton Range:	(Max.) L: unlimited W: 500 mm (19.6") H: 500 mm (19.6") (Min.) L: 120 mm (4.7") W: 110 mm (4.3") H: 120 mm (4.7")
Carton Weight:	0.5 kg - 30 kg (1.1 lb - 66.1 lb)
Power Requirements:	120 VAC 15amp (dedicated line)
Noise Emission:	88.7dB
Ambient Temperature:	5 °C - 40°C (41 F - 104 F) - Relative Humidity 35-85%RH
Working Height:	600 mm (23.6") - 800 mm (31.5") (adjustable)
Machine Size:	Length: 1389 mm (54.7") (with outfeed roller table) Width: 941 mm (37") (with hand crank) Height: 1303 mm (51.3") (with hand crank)
Machine Weight:	151 kg (333 lb)

Why the EXC-133SD?

- The EXC-133SD is a top of the line machine
- Designed to suit a variety of light-to-heavy duty uniform carton closure applications
- Easy tape changeover
- Top and bottom seal and an infeed/outfeed roller table

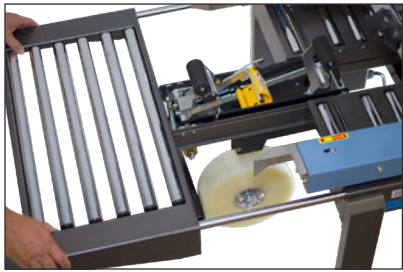
All Logix equipment is CSA or equivalent special inspection certified for insurance compliance liability.



1



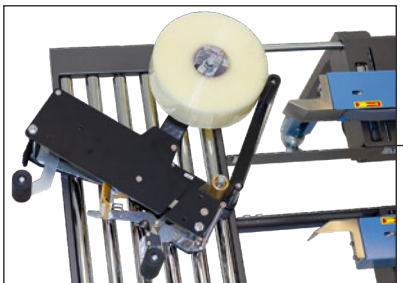
2



3



4

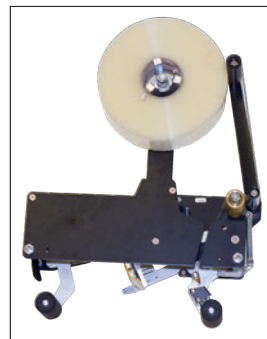


5

Changing the bottom tape roll is easy by pulling the front in-feed table towards you. The table acts like a drawer and pulls the tape head housing with it to allow ease of access to the tape head for removal. (Illustrated in sequence with Picture 1 through Picture 5)



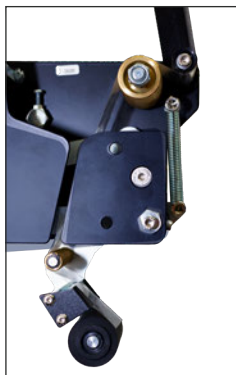
The Top Squeezing Rollers keep the gap tight on the box as it passes through taper for maximum tape coverage



The EZ Load II Tape Head is the easiest tape head to thread on the market and requires little maintenance as all the bushings are self-lubricating.



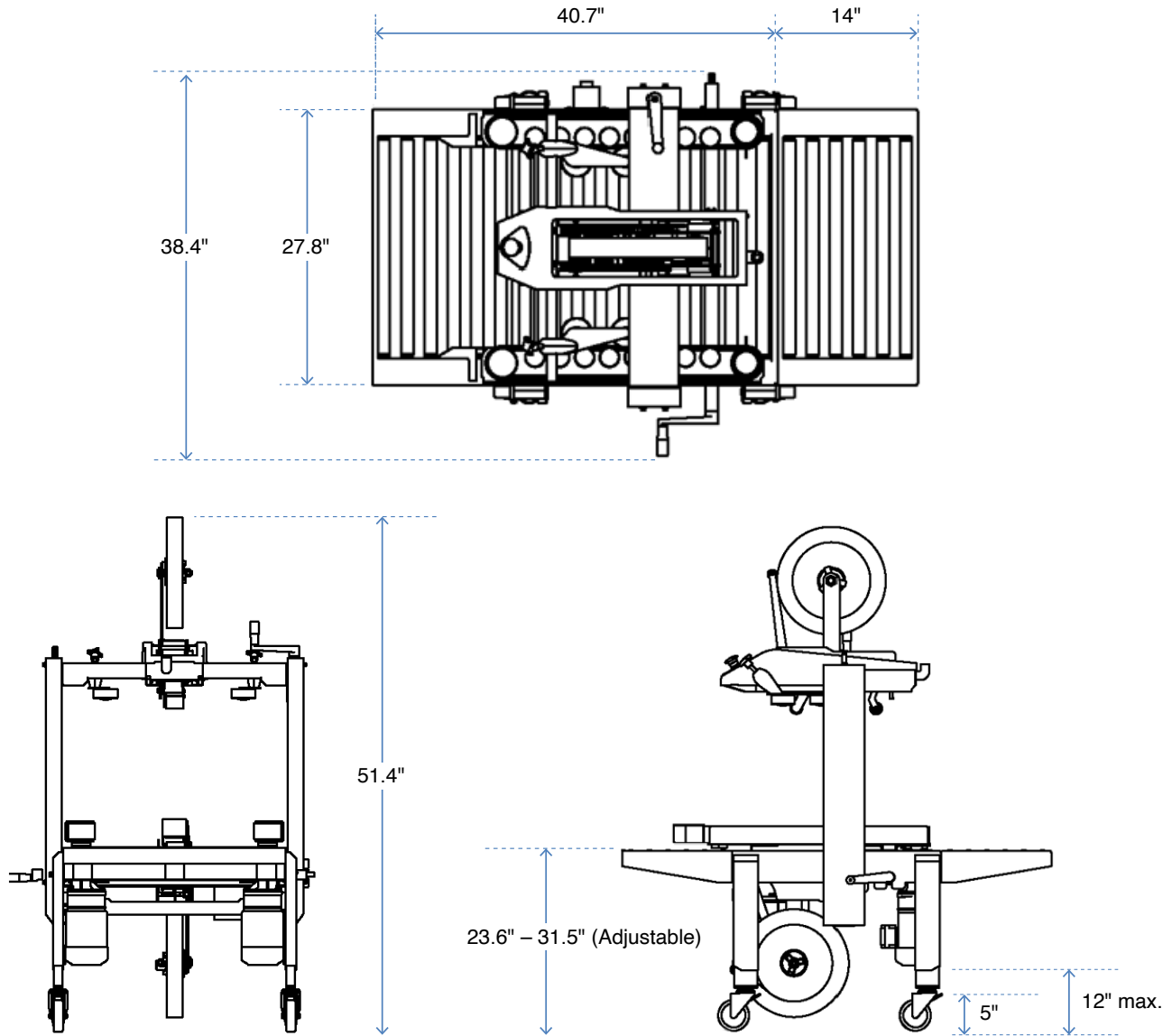
The Stripper Arm (pictured on the right) allows the tape to strip off in the same location to prevent tape head bobbing during unwind.self-lubricating.



The access slot allows for ease of threading the head. The one way brass roller (larger brass roller) requires no maintenance and has adjustments to assist in tape application.

DOVERCO

Strategic. Packaging.



1-800-363-0697

Montreal: (514) 420-6060 | Vaughan: (289) 256-2141

2111 32nd Avenue, Montreal, Quebec H8T 3J1 | 250 Trowers Road, Unit 7, Vaughan, Ontario L4L 5Z6

www.doverco.ca • sales@doverco.ca