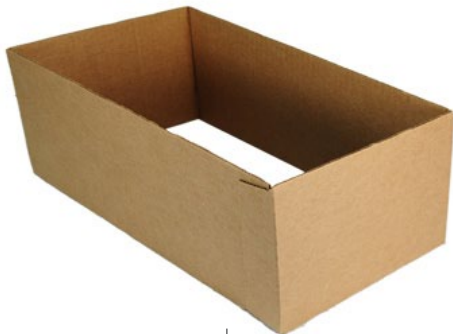




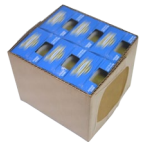
JACKETPACK



REPLACE THE CASE. With the JacketPack, a sheet of cardboard is die-cut, folded and glued on a single flap. On a traditional RSC, the flaps overlap each other and are located at the bottom and at the top, as the case is erected and then filled from the top. The JacketPack system reduces the amount of corrugate overlaps down to a single one, and eliminates the top and bottom of the case. A shrink overwrap seals the case, providing superb palletizing strength, product protection and distribution integrity.

POLYPACK'S JACKETPACK system is also available as a double U-Board configuration for glue-free operation.

- *Save up to 50% on corrugated material costs
- *Fast ROI on equipment through material costs alone
- *Provides stacking/palletizing support
- *Jacket is formed tightly around the product
- *Multi-layer packaging capability



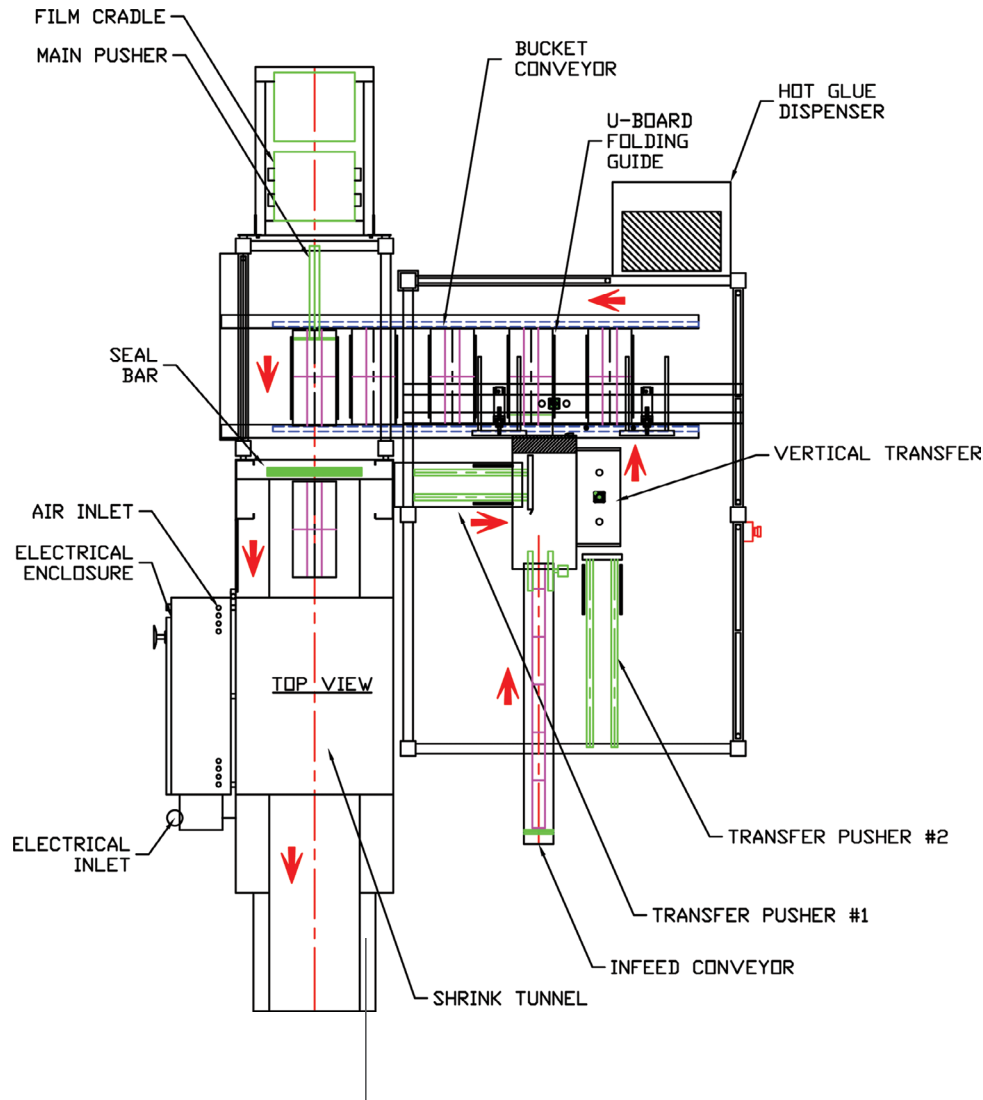
DOVERCO
Strategic. Packaging.

2111 32nd Avenue, Montreal, Quebec H8T 3J1
Tel: (514) 420-6060 • Fax: (514) 420-6015

250 Trowers Road, Unit 7, Vaughan, Ontario L4L 5Z6
Tel: (289) 256-2141 • Fax: (289) 256-2142

Toll Free: 1-800-363-0697 • www.doverco.ca • sales@doverco.ca

JACKETPACK



JACKETPACK SYSTEM FEATURES

- *Stainless Steel Main Frame
- *Stainless Steel Bucket Conveyors
- *NEMA 12 Control Panel
- *208 - 575 volts - 3 phase, 50 or 60 hz.
- *Pneumatic controls require 65-70 p.s.i. (5 bars) @ 10 c.f.m.
- *Self-Monitoring Diagnostics



DOVERCO
Strategic. Packaging.

2111 32nd Avenue, Montreal, Quebec H8T 3J1
Tel: (514) 420-6060 • Fax: (514) 420-6015

250 Trowers Road, Unit 7, Vaughan, Ontario L4L 5Z6
Tel: (289) 256-2141 • Fax: (289) 256-2142

Toll Free: 1-800-363-0697 • www.doverco.ca • sales@doverco.ca